

A0801 INDEX 08 -- Ladder Eliminations

1	0802 VOUIROS, T	
	8.309_4.256_233.61	0802 VOUIROS, T
2	0801 KANTARTZIS, V	
	0.000_-.LBY_00.00	

A0901 INDEX 09 -- Ladder Eliminations

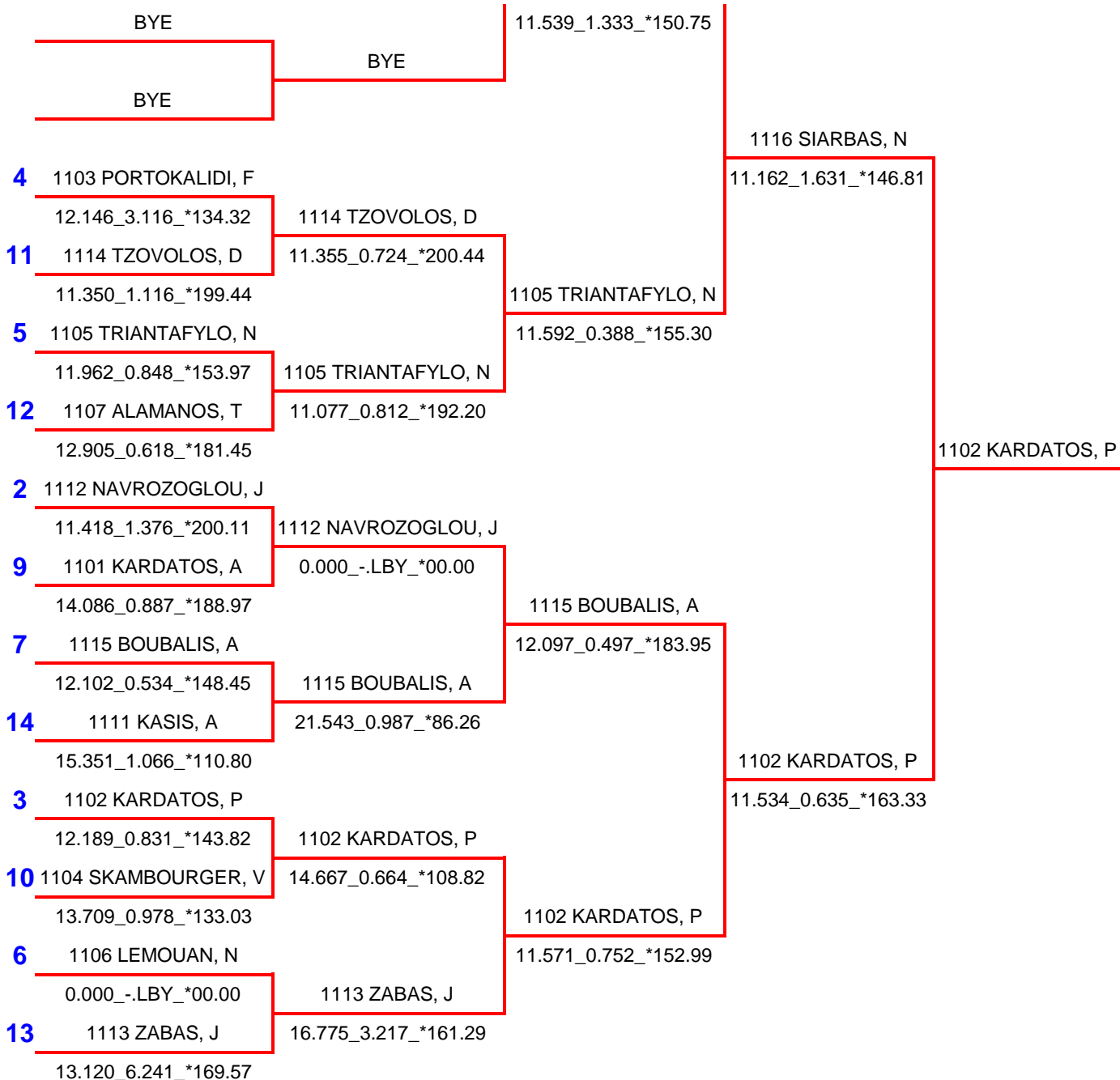
1	0903 PETROPOULOS, S		
	9.895_3.101_178.30	0903 PETROPOULOS, S	
	BYE	0.000_0.000_00.00	
3	0902 ZAXOS, D		0902 ZAXOS, D
	0.000_2.439_00.00	0902 ZAXOS, D	25.354_2.529_74.61
5	0905 STEFANAKOS, T	11.142_1.107_234.98	
	0.000_-.LBY_00.00		0902 ZAXOS, D
2	0904 XONDROPOULO, F		
	9.867_1.489_241.28	0904 XONDROPOULO, F	
4	0901 APERGIS, J	22.584_1.795_100.61	
	14.683_1.006_131.86	0904 XONDROPOULO, F	
	BYE	0.000_-.LBY_00.00	
	BYE	BYE	
	BYE		

A1001 INDEX 10 -- Ladder Eliminations

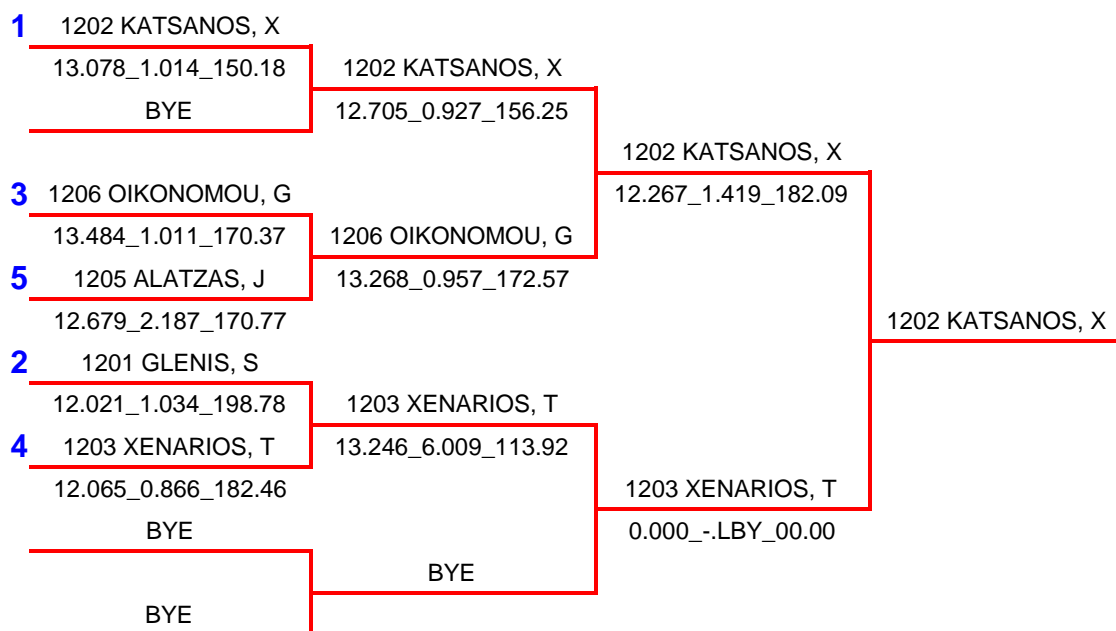
1	1002 TZOVARAS, G		
	BYE	1002 TZOVARAS, G	
		10.440_0.540_222.63	
			1002 TZOVARAS, G
2	1001 MYZITHRAS, K		
	11.285_0.916_225.42	1001 MYZITHRAS, K	
3	1003 SIMINIS, K	14.754_0.086_105.44	
	11.277_0.952_217.12		

A1101 INDEX 11 -- Ladder Eliminations

1	1116 SIARBAS, N		
	10.668_3.093_*207.61	1116 SIARBAS, N	
8	1110 FRAGOS, G	10.835_2.994_*203.16	
	0.000_-.LBY_*00.00		1116 SIARBAS, N



A1201 INDEX 12 -- Ladder Eliminations



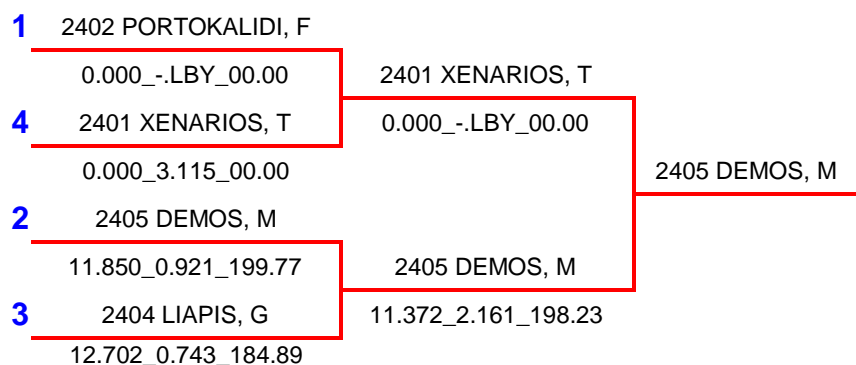
A1301 INDEX 13 -- Ladder Eliminations

1	1301 MILIOS, V	
	14.101_0.494_157.82	1301 MILIOS, V
2	1302 LIAPIS, G	
	12.155_0.634_187.98	

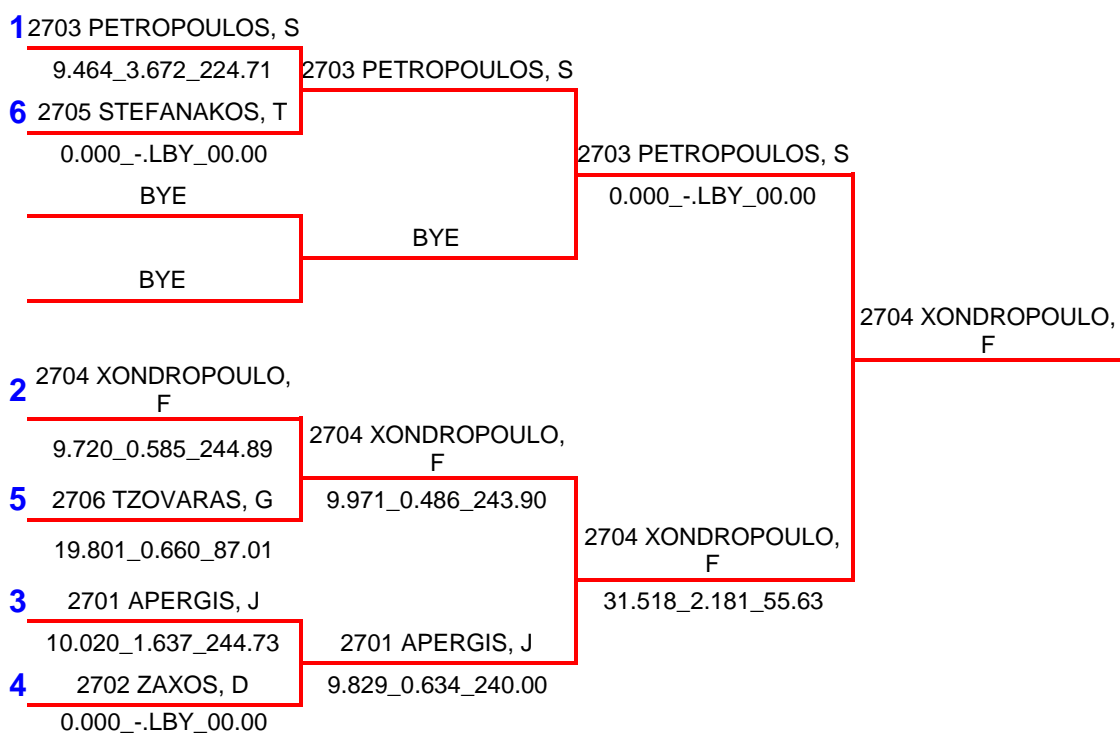
A2301 BT 1 -- Ladder Eliminations

1	2306 SKAMNELOS, S			
	9.953_0.790_*245.06	2306 SKAMNELOS, S		
	BYE	9.482_-.LBY_*226.98		
			2309 BOUBALIS, A	
5	2309 BOUBALIS, A		12.788_0.598_*141.62	
	11.323_0.513_*190.77	2309 BOUBALIS, A		
6	2307 SIMINIS, K			
	12.226_0.959_*214.79	30.738_1.092_*72.71		
			2309 BOUBALIS, A	
2	2308 VARZELIOTIS, K			
	0.000_-.LBY_*00.00	2301 KARDATOS, A		
9	2301 KARDATOS, A			
	13.633_0.913_*187.79	12.835_1.546_*200.55		
	BYE	2301 KARDATOS, A		
		13.901_0.570_*188.87		
	BYE	BYE		
				2302 KARDATOS, P
3	2305 LEMOUAN, N			
	0.000_-.LBY_*00.00	2303 ZAMBAS, J		
8	2303 ZAMBAS, J			
	12.733_0.809_*169.65	12.896_0.859_*169.89		
			2302 KARDATOS, P	
4	2302 KARDATOS, P		17.573_1.177_*112.88	
	11.221_0.693_*201.00	2302 KARDATOS, P		
7	2304 SKAMBOURGEA, V			
	12.891_0.962_*189.67	11.233_0.716_*195.86		
	BYE		2302 KARDATOS, P	
			11.155_0.634_*204.54	
	BYE	BYE		
	BYE			
	BYE			
	BYE	BYE		
	BYE			

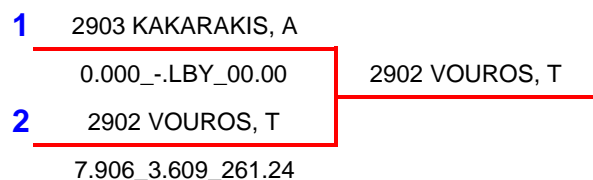
A2401 BT 2 -- Ladder Eliminations



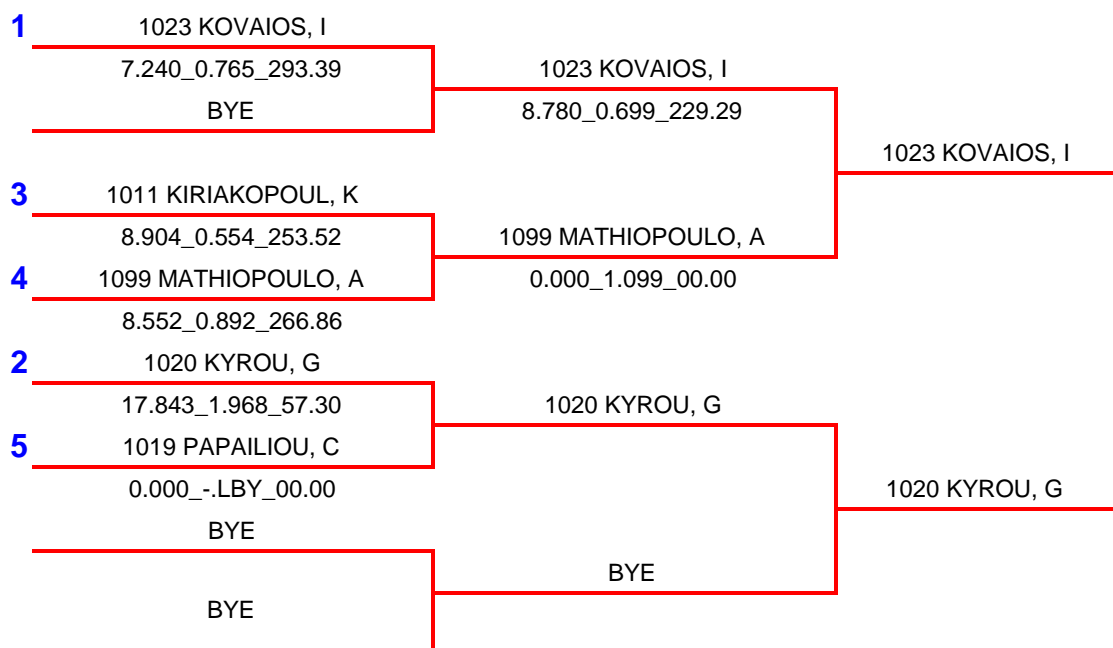
A2701 AT 1 -- Ladder Eliminations



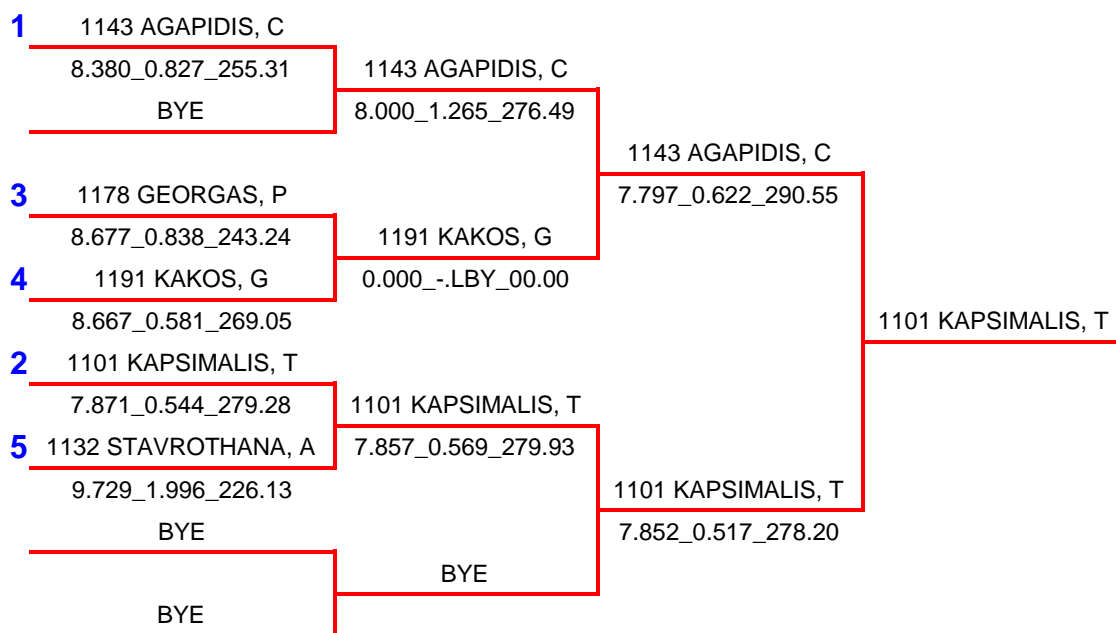
A2901 OPEN -- Ladder Eliminations



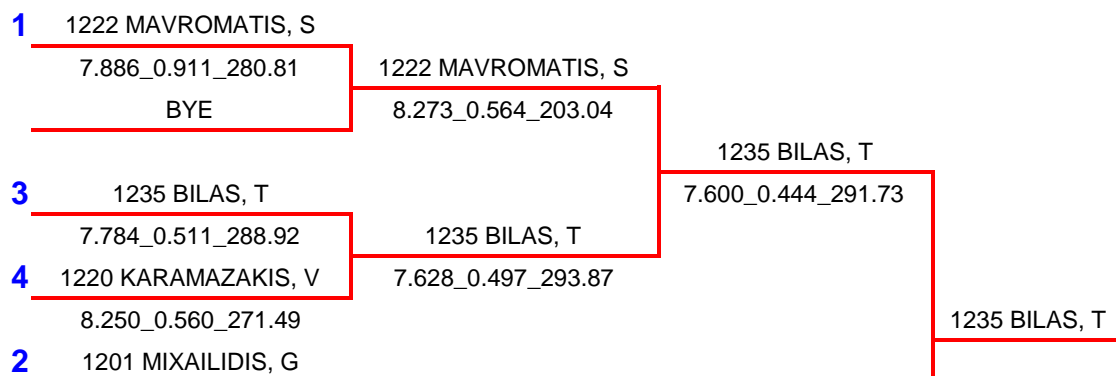
M1001 SUPER PRO -- Ladder Eliminations

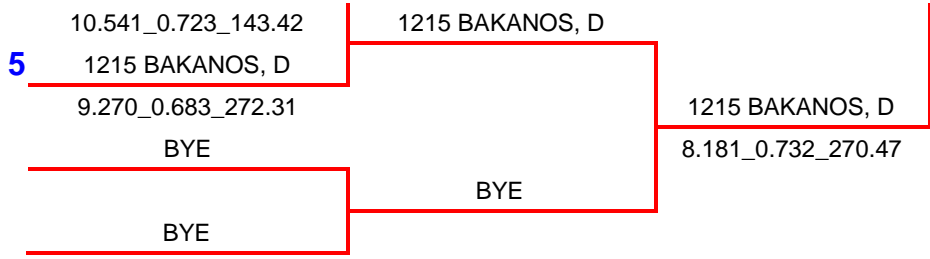


M1101 PRO STREET 2 -- Ladder Eliminations

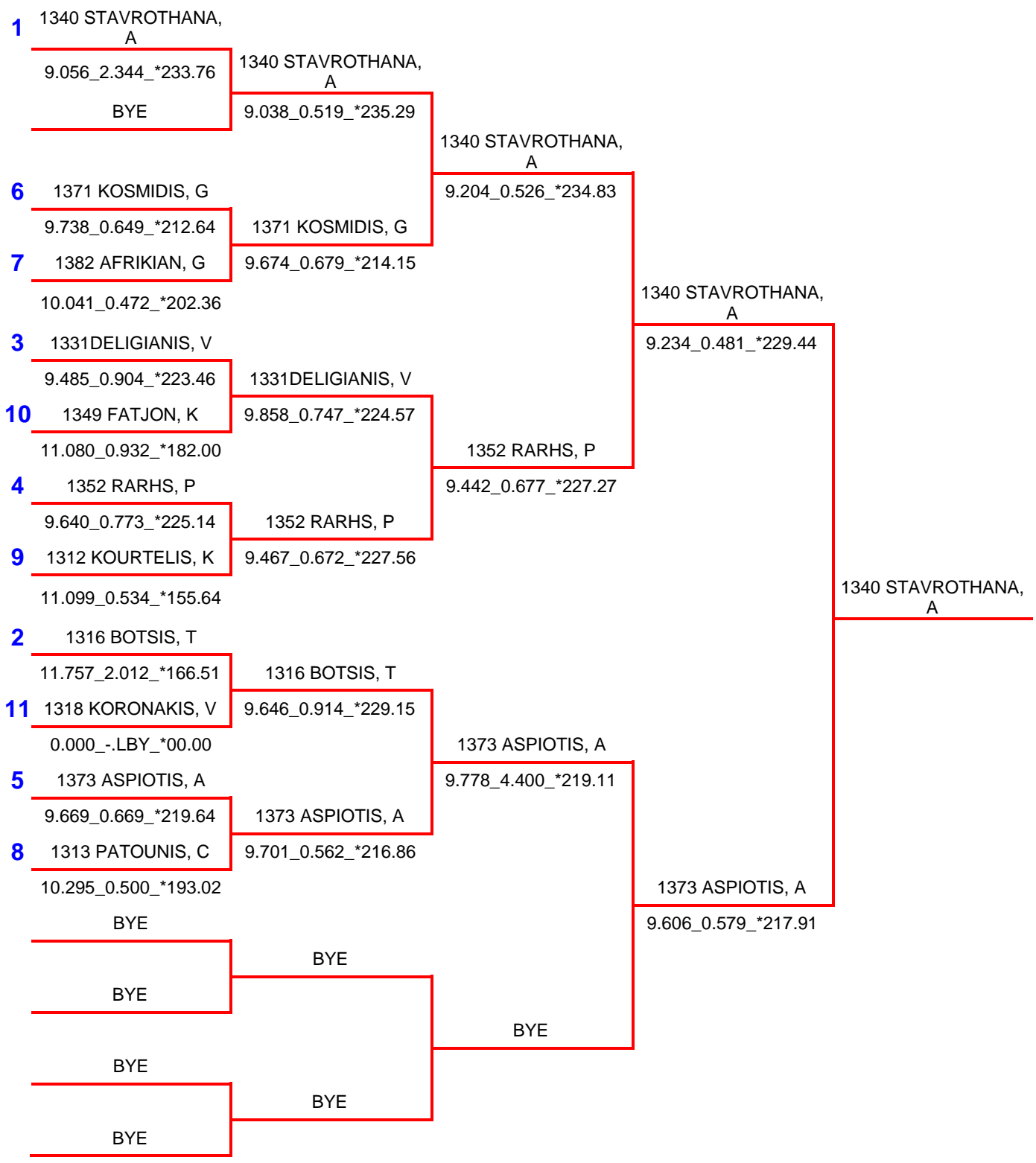


M1201 SUPER STREET -- Ladder Eliminations

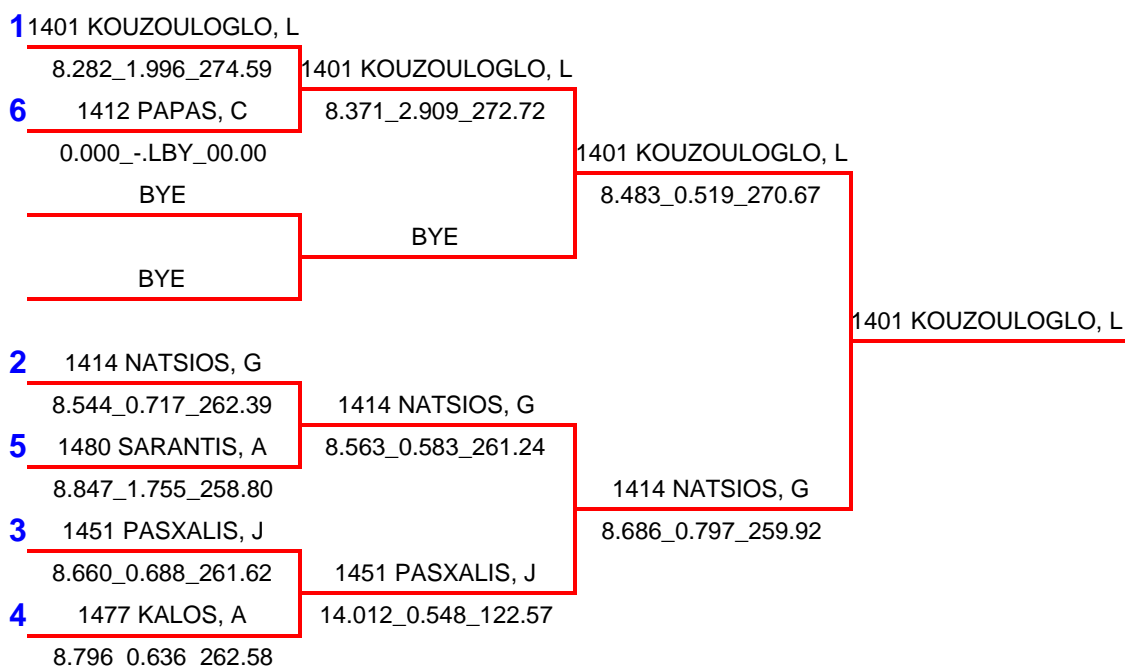




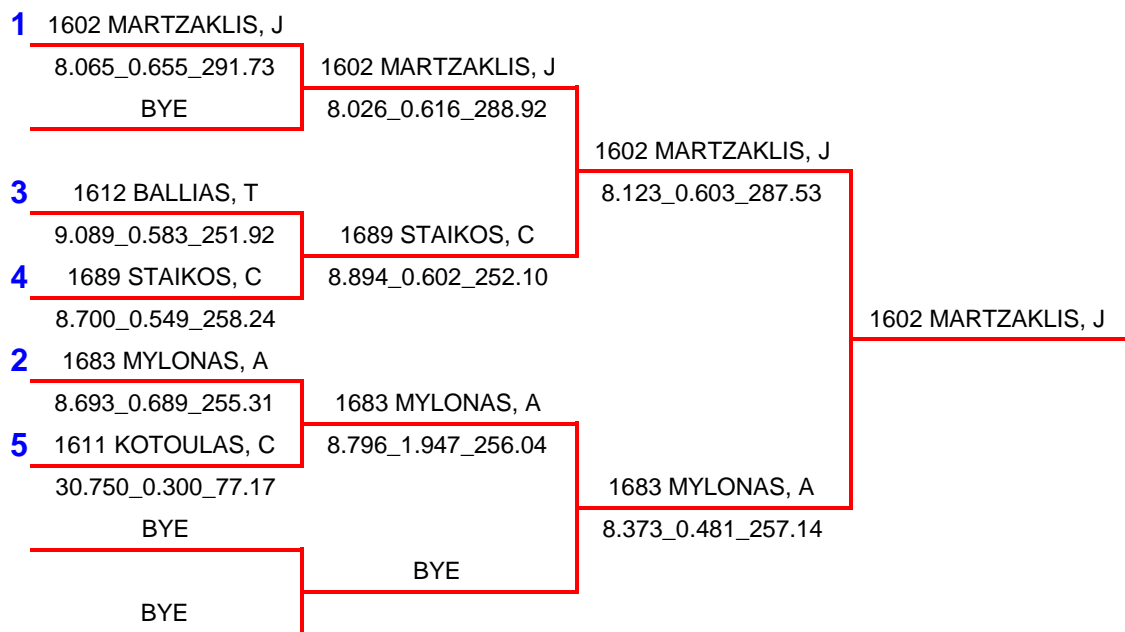
M1301 PRO STREET 1 -- Ladder Eliminations



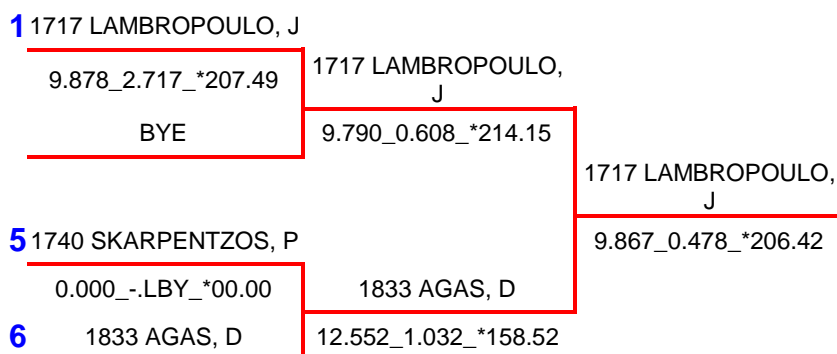
M1401 STREET 2 -- Ladder Eliminations

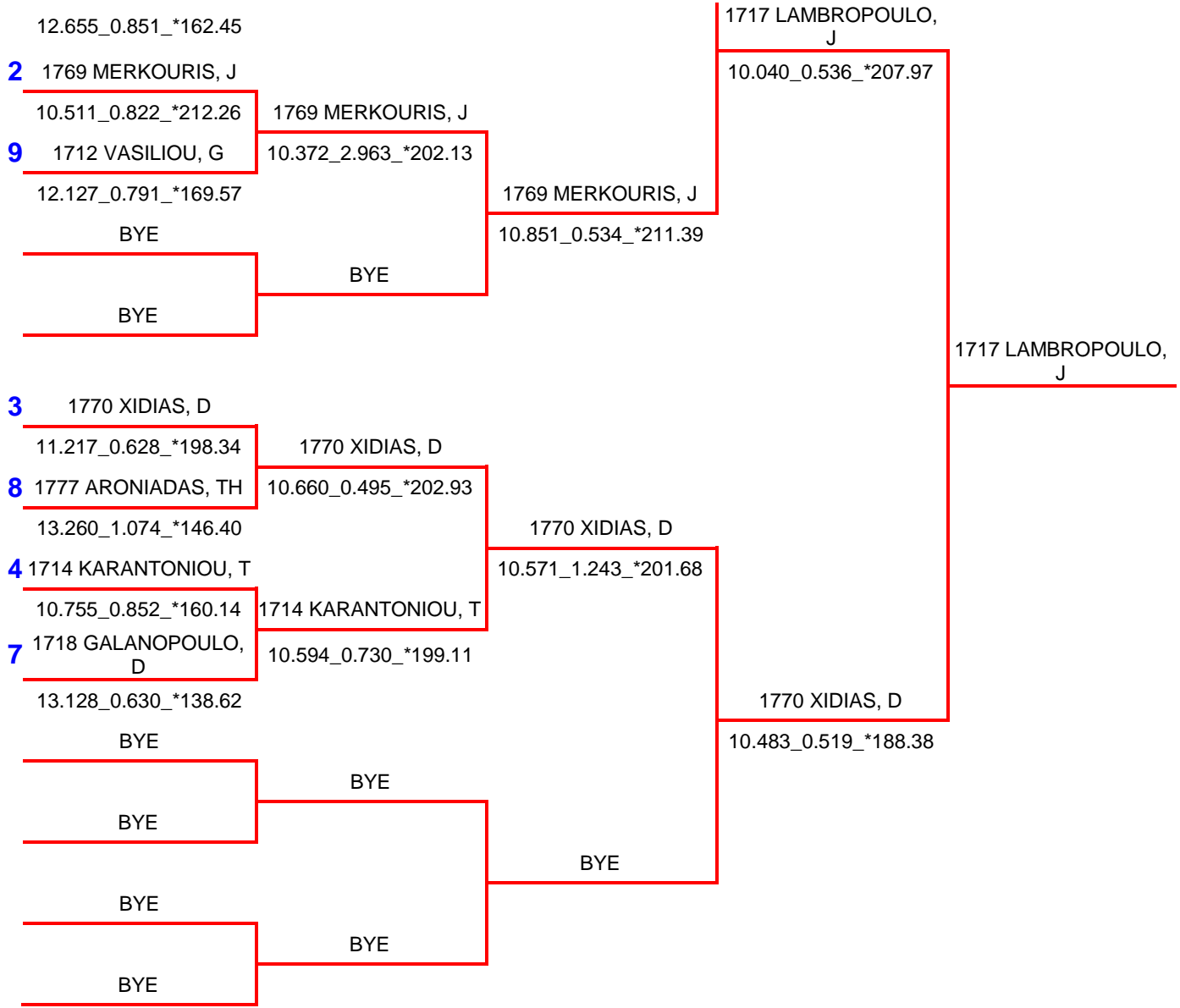


M1601 REAL STREET -- Ladder Eliminations

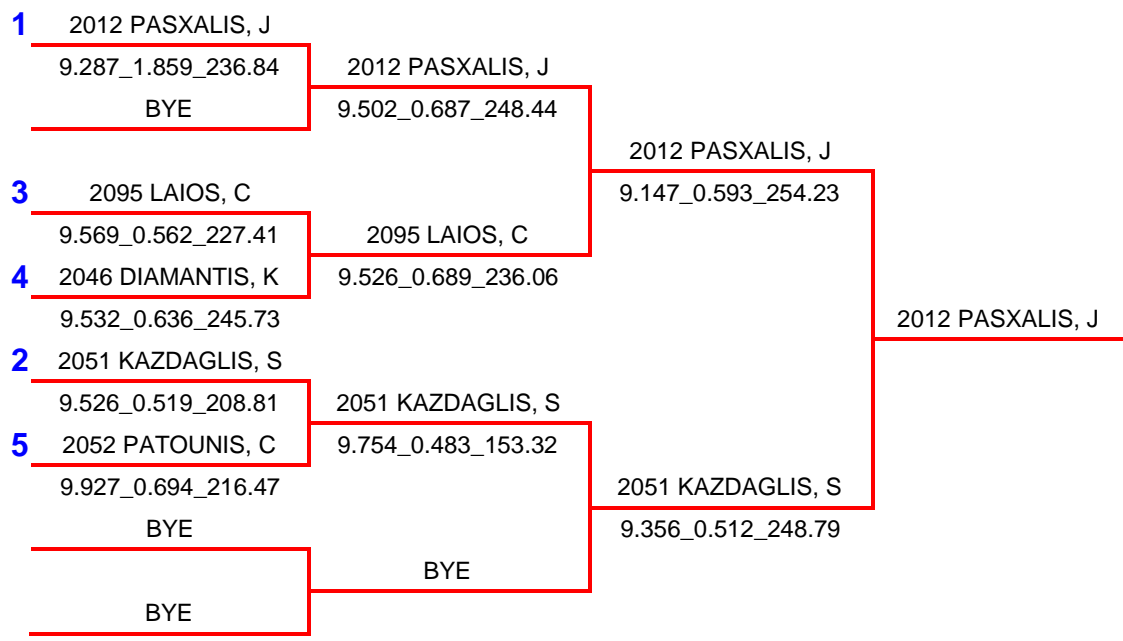


M1701 PRO Z -- Ladder Eliminations





M2001 TRUE STREET 9 -- Ladder Eliminations



A0801 INDEX 08 -- Qualify Round

Driver

1 0802 VOUIROS, T	8.170	0.170	224.01	3.442
2 0801 KANTARTZIS, V	8.337	0.337	277.56	4.450

A0901 INDEX 09 -- Qualify Round

Driver

1 0903 PETROPOULOS, S	10.107	1.107	252.27	4.018
2 0904 XONDROPOULO, F	10.257	1.257	234.98	0.590
3 0902 ZAXOS, D	10.603	1.603	230.32	2.375
4 0901 APERGIS, J	11.171	2.171	193.75	1.522
5 0905 STEFANAKOS, T	11.815	2.815	167.05	2.390

A1001INDEX 10 -- Qualify Round

Driver

1 1002 TZOVARAS, G	10.644	0.644	216.08	2.570
2 1001 MYZITHRAS, K	10.655	0.655	228.71	1.567
3 1003 SIMINIS, K	12.009	2.009	203.04	1.808

A1101 INDEX 11 -- Qualify Round

Driver

1 1116 SIARBAS, N	11.036	0.036	206.30	2.143
2 1112 NAVROZOGLOU, J	11.207	0.207	204.08	1.831
3 1102 KARDATOS, P	11.238	0.238	199.44	0.773
4 1103 PORTOKALIDI, F	11.317	0.317	189.67	2.469
5 1105 TRIANTAFYLO, N	11.331	0.331	199.22	4.703
6 1106 LEMOUAN, N	11.364	0.364	207.85	0.682
7 1115 BOUBALIS, A	11.414	0.414	191.89	0.599
8 1110 FRAGOS, G	12.195	1.195	171.18	3.780
9 1101 KARDATOS, A	12.405	1.405	185.85	1.576
10 1104 SKAMBOURGER, V	12.613	1.613	187.50	1.007
11 1114 TZOVOLOS, D	12.885	1.885	173.74	1.021
12 1107 ALAMANOS, T	12.986	1.986	159.36	1.027
13 1113 ZABAS, J	13.135	2.135	169.81	2.696
14 1111 KASIS, A	17.769	6.769	105.38	1.612

A1201 INDEX 12 -- Qualify Round

Driver

1 1202 KATSANOS, X	12.029	0.029	182.92	1.069
2 1209 DEMOS, M	12.256	0.256	139.96	1.313
3 1201 GLENIS, S	12.675	0.675	171.59	1.432
4 1206 OIKONOMOU, G	13.466	1.466	164.98	1.107
5 1203 XENARIOS, T	13.650	1.650	121.00	1.131
6 1205 ALATZAS, J	14.203	2.203	163.71	1.680

A1301 INDEX 13 -- Qualify Round

Driver

1 1301 MILIOS, V	13.778	0.778	160.57	0.912
2 1302 LIAPIS, G	15.860	2.860	114.28	2.137

A2301 BT 1 -- Qualify Round

Driver

1 2306 SKAMNELOS, S	10.159	B0.000	225.00	0.516
2 2308 VARZELIOTIS, K	10.797	B0.000	209.18	1.233
3 2305 LEMOUAN, N	11.287	B0.000	208.57	0.841
4 2302 KARDATOS, P	11.336	B0.000	201.90	0.824
5 2309 BOUBALIS, A	11.336	B0.000	193.44	1.148
6 2307 SIMINIS, K	11.776	B0.000	201.34	1.123
7 2304 SKAMBOURGEA, V	12.900	B0.000	185.18	1.769
8 2303 ZAMBAS, J	12.997	B0.000	167.20	4.858
9 2301 KARDATOS, A	13.499	B0.000	186.72	1.233

A2401 BT 2 -- Qualify Round

Driver

1 2402 PORTOKALIDI, F	11.286	B0.000	189.67	0.867
2 2405 DEMOS, M	11.902	B0.000	196.61	R0.302
3 2404 LIAPIS, G	12.124	B0.000	188.58	2.196
4 2401 XENARIOS, T	12.787	B0.000	160.78	1.446

A2701 AT 1 -- Qualify Round

Driver

1 2703 PETROPOULOS, S	8.959	B0.000	257.87	3.339
2 2704 XONDROPOULO, F	10.128	B0.000	237.31	0.587

3 2701 APERGIS, J	10.258	B0.000	218.18	2.009
4 2702 ZAXOS, D	10.570	B0.000	228.71	2.343
5 2706 TZOVARAS, G	10.647	B0.000	217.91	3.380
6 2705 STEFANAKOS, T	10.770	B0.000	218.44	R0.354

A2801 AT 2 -- Qualify Round

Driver

1 2801 KANTARTZIS, V	8.077	B0.000	279.93	3.844
----------------------	-------	--------	--------	-------

A2901 OPEN -- Qualify Round

Driver

1 2903 KAKARAKIS, A	8.892	B0.000	215.31	2.667
2 2902 VOUROIS, T	9.504	B0.000	190.67	3.197

M1001 SUPER PRO -- Qualify Round

Driver

1 1023 KOVAIOS, I	7.440	B0.000	292.44	1.301
2 1020 KYROU, G	7.772	B0.000	294.59	0.824
3 1011 KIRIAKOPOUL, K	7.973	B0.000	262.58	1.477
4 1099 MATHIOPOULO, A	8.327	B0.000	240.00	1.449
5 1019 PAPAILIOU, C	10.513	B0.000	130.57	0.991

M1101 PRO STREET 2 -- Qualify Round

Driver

1 1143 AGAPIDIS, C	7.856	B0.000	286.85	0.736
2 1101 KAPSIMALIS, T	7.885	B0.000	276.28	0.521
3 1178 GEORGAS, P	8.483	B0.000	256.59	1.001
4 1191 KAKOS, G	8.625	B0.000	270.27	0.551
5 1132 STAVROTHANA, A	9.837	B0.000	221.53	0.880

M1201 SUPER STREET -- Qualify Round

Driver

1 1222 MAVROMATIS, S	7.688	B0.000	287.31	0.650
2 1201 MIXAILIDIS, G	7.822	B0.000	290.55	0.533
3 1235 BILAS, T	7.879	B0.000	285.48	0.523
4 1220 KARAMAZAKIS, V	7.987	B0.000	279.06	0.524

5 1215 BAKANOS, D

9.705

B0.000

263.15

0.861

M1301 PRO STREET 1 -- Qualify Round

Driver

1 1340 STAVROTHANA, A	8.948	B0.000	235.60	0.873
2 1316 BOTSIS, T	9.177	B0.000	232.55	1.517
3 1331DELIGIANIS, V	9.472	B0.000	223.18	2.182
4 1352 RARHS, P	9.565	B0.000	229.44	1.244
5 1373 ASPIOTIS, A	9.604	B0.000	225.42	2.005
6 1371 KOSMIDIS, G	9.704	B0.000	217.78	0.871
7 1382 AFRIKIAN, G	9.761	B0.000	209.91	0.508
8 1313 PATOUNIS, C	9.854	B0.000	219.37	0.992
9 1312 KOURTELIS, K	10.066	B0.000	217.65	0.860
10 1349 FATJON, K	10.976	B0.000	182.92	2.227
11 1318 KORONAKIS, V	11.294	B0.000	197.04	0.404

M1401 STREET 2 -- Qualify Round

Driver

1 1401 KOUZOULOGLO, L	8.408	B0.000	272.52	0.626
2 1414 NATSIOS, G	8.486	B0.000	262.77	1.271
3 1451 PASXALIS, J	8.674	B0.000	262.00	1.903
4 1477 KALOS, A	8.680	B0.000	260.86	0.607
5 1480 SARANTIS, A	8.769	B0.000	256.04	1.245
6 1412 PAPAS, C	8.841	B0.000	266.07	0.774

M1601 REAL STREET -- Qualify Round

Driver

1 1602 MARTZAKLIS, J	7.939	B0.000	290.32	0.601
2 1683 MYLONAS, A	8.263	B0.000	271.90	0.809
3 1612 BALLIAS, T	8.765	B0.000	262.19	0.537
4 1689 STAIKOS, C	8.977	B0.000	262.96	0.725
5 1611 KOTOULAS, C	9.068	B0.000	249.30	0.737

M1701 PRO Z -- Qualify Round

Driver

1 1717 LAMBROPOULO, J	10.016	B0.000	207.37	0.590
2 1769 MERKOURIS, J	10.272	B0.000	219.91	1.074
3 1770 XIDIAS, D	10.445	B0.000	213.01	1.750
4 1714 KARANTONIOU, T	10.499	B0.000	216.86	2.164
5 1740 SKARPENTZOS, P	11.409	B0.000	186.62	2.266
6 1833 AGAS, D	12.454	B0.000	161.21	1.347
7 1718 GALANOPOULO, D	13.025	B0.000	157.61	0.861
8 1777 ARONIADAS, TH	13.027	B0.000	152.54	1.977
9 1712 VASILIOU, G	14.071	B0.000	130.62	1.046